

ArchDaily &gt; Projects &gt; Community Center &gt; Cambodia &gt; Squire &amp; Partners &gt; 2018 &gt; Agriculture Technology C

## Agriculture Technology Centre, Cambodia / Squire & Partners + SAWA

17:00 - 9 February, 2019

Save this project

Share Tweet Save



Architects : SAWA, Squire & Partners

Location : Krong Samraong, Cambodia

Category : Community Center

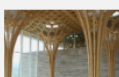
Area : 310.0 m2

Project Year : 2018

MORE SPECS

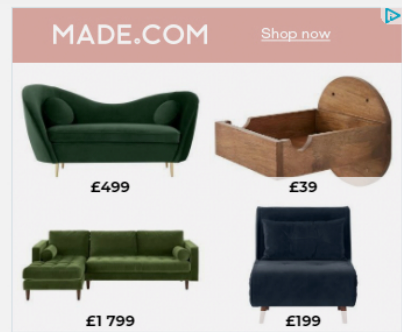


### Recommended Products



Free Form Structures for  
Wood Projects  
Blumer Lehmann

QUOTE THIS PRODUCT



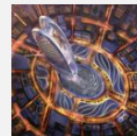
### MORE FROM THESE OFFICES



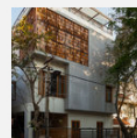
The Frames / Squire & Partners

[More from Squire & Partners »](#)

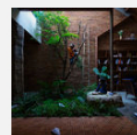
### MOST VISITED



A First Look at Dubai's  
Supertall "Burj Jumeira"



The Abacus House / studioXS

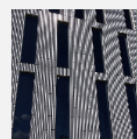


Natural Light and  
Ventilation: 17 Remarkable  
Courtyards

### MOST VISITED PRODUCTS



Copper Surface - Gold |  
TECU®



Terracotta Rainscreen Panels  
- Glazed Panels | Shildan



Metal Wall and Roof Panels -  
Mini-V-Beam™ | AEP Span



CNC Production for Wood  
Projects  
Blumer Lehmann



Porcelain Tiles - Larix  
Collection  
Ceramiche Refin

MADE.COM

Shop now



£1 799



£699



£1 799



£799

*Text description provided by the architects.* A new community Agriculture & Technology centre has launched in [Krong Samraong](#), Cambodia, designed as a collaboration between Squire & Partners and SAWA for the Green Shoots Foundation. Built by local contractors, farmers and 16-25 year olds over a four-month period - assisted by volunteers from the UK - the development provides education in agricultural technologies to support children and adults in the local community, and facilitates opportunities for enterprise.

Never miss a good story - subscribe to our daily newsletter.

Email

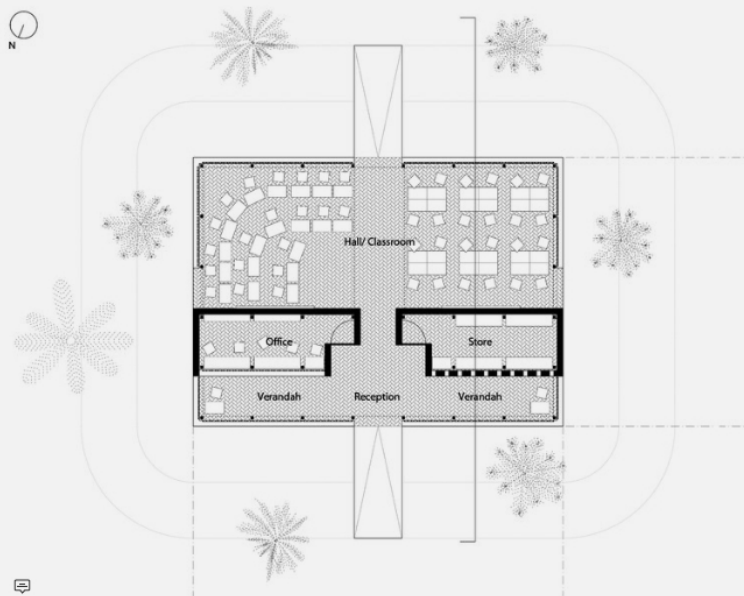
SUBSCRIBE



The masterplan elements are designed to be responsive to the tropical climate – with raised floors to negate flood risk, screens to diffuse sunlight whilst providing ventilation, and overhanging roof eaves for the rainy season – as well as utilising local resources, labour and skills.



The main structure provides a multi-use hall with office and storage spaces, and a full width screened veranda. Within a robust rectangular steel frame, the primary building materials comprise bricks made on site from stabilised earth, rice husk/clay blocks and bamboo screens. Cassava and sand plaster is used to render walls, created in collaboration with local organic farm OrganiKH.



Internally, a cast entrance ramp with bamboo imprints leads to a flexible screened veranda space with built-in countertops used for workshops or as pop up shops for local producers. Office and storage uses provide separation between the social veranda, and two generous classrooms set either side of a central hallway.



Woven grass screens, made by a local women's cooperative, can be lowered to define the two rooms, or rolled up to create one large gathering space. Grass mats are also used as blinds and ceiling canopies, while local bamboo fisherman's baskets were re-purposed as lampshades.



Smaller outbuildings provide a block making shelter, biogas-toilet with a reciprocal spiral bamboo roof topped by a repurposed metal drum rooflight, a thatched chicken roosting house, water catchment and filtration system, and a curved lattice split bamboo tunnel planted with native plants such as cucumbers and long beans. Hand painted stone signs in Khmer and English identify each building within the site.





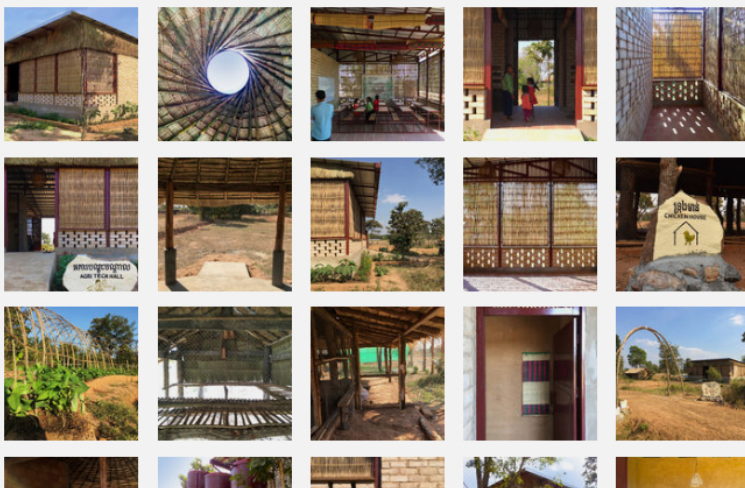
The Agriculture & Technology Centre was launched by the Mayor of [Krong Samraong](#), and Governor H W Lim Sokto, on 20 December 2018. This first phase has delivered a series of buildings which will serve up to 200 students by 2020, with a planned second phase to expand teaching facilities and create a solar provision to support the development.

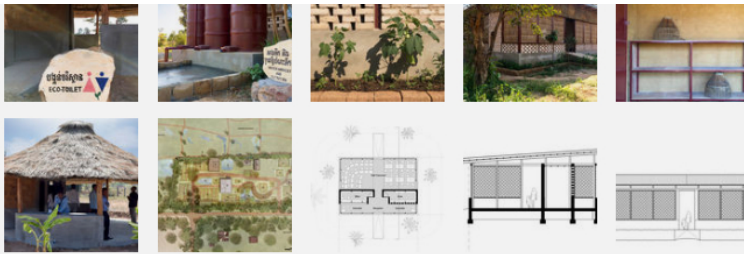


The project was financed via an innovative model of curated 'package holidays' for volunteers, crowdfunding, Khmer Supper Clubs hosted by Squire & Partners, and raising awareness with a concept model of the development exhibited at the Royal Academy Summer Exhibition in London in summer 2018. Find out more and donate at [www.greenshootsfoundation.org/support-us/](http://www.greenshootsfoundation.org/support-us/)



[View the complete gallery](#)






## Project location



Location to be used only as a reference. It could indicate city/country but not exact address.

 Save this project

 Share  Tweet  Save

About this office

### Squire & Partners

Office

[FOLLOW](#)

### SAWA

Office

[FOLLOW](#)

## Products:

[Wood](#)

[Brick](#)

## See more:

[Projects](#)

[Built Projects](#)

[Selected Projects](#)

[Public Architecture](#)

[Community](#)

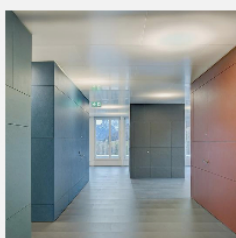
[Community center](#)

[Krong Samraong](#)

[Cambodia](#)

Cite: "Agriculture Technology Centre, Cambodia / Squire & Partners + SAWA" 09 Feb 2019. ArchDaily. Accessed 11 Feb 2019. <<https://www.archdaily.com/910995/agriculture-technology-centre-cambodia-squire-and-partners-plus-sawa/>> ISSN 0719-8884

## BROWSE THE CATALOG



**Swisspearl Largo Interior  
Fiber Cement Panels**

Swisspearl

**Modulo - Rainscreen  
Cladding System**

FunderMax

**Ceiling Light - Duo**

Vibia